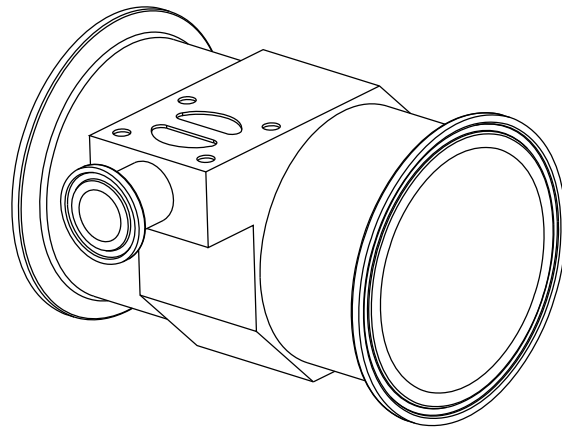
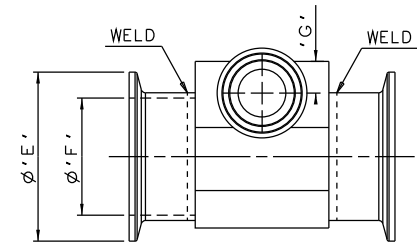
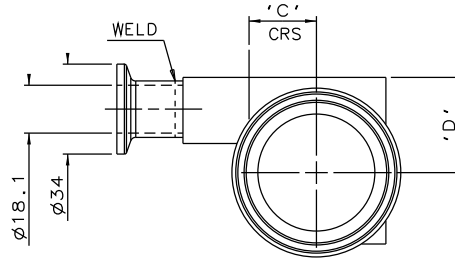
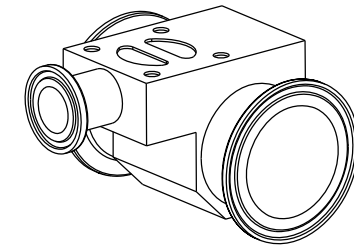
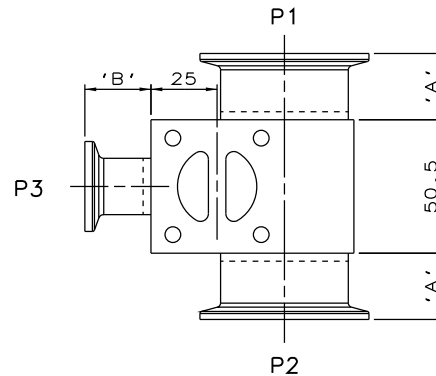


DN15 MAINLINE ONLY

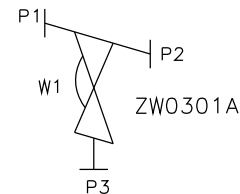


DN65 TO DN100  
MAINLINE ONLY



DN20 TO DN50  
MAINLINE ONLY

MAINLINE SIZE mm	A mm	B mm	C mm	D mm	øE mm	øF mm	G mm	BODY WEIGHT Kgs
DN15	25.0	25.0	12.1	23.5	34.0	18.1	12.7	0.7
DN20	25.0	25.0	15.2	26.0	34.0	23.7	13.0	0.6
DN25	25.0	25.0	18.2	30.0	50.4	29.7	12.7	0.8
DN32	25.0	25.0	22.2	34.0	63.9	38.4	12.7	1.0
DN40	25.0	25.0	25.5	36.0	63.9	44.3	12.7	1.0
DN50	25.0	25.0	30.7	40.0	77.4	55.1	12.7	1.4
DN65	50.0	25.0	38.5	44.0	90.9	70.9	12.7	1.7
DN80	50.0	25.0	45.2	47.0	105.9	83.7	13.7	1.8
DN100	50.0	25.0	57.9	60.2	130.0	109.1	12.7	2.4



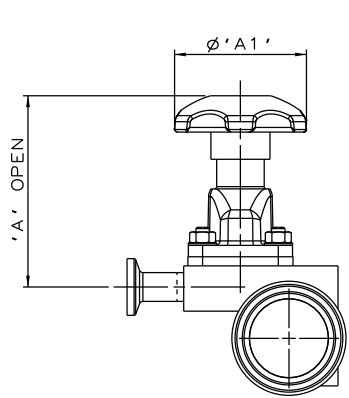
ORIENTATION AS PER  
P&ID DIAGRAM FOR  
OPTIMUM DRAINABILITY.

The information on this sheet is Private and Confidential and is the property of Crane Process Flow Technologies Limited and must not be published directly or indirectly in any manner whatsoever without the written permission of the Company and must not be used in any way detrimental to their interests.  
© Crane Process Flow Technologies

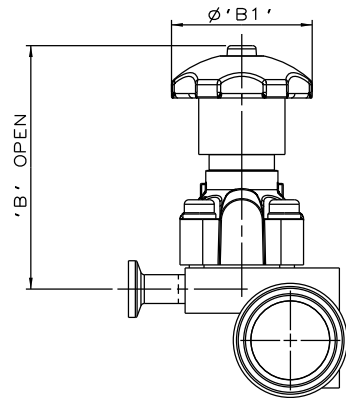
<b>CRANE</b>	Process Flow Technologies A Crane Co. Company	<b>Saunders</b> The Science Inside
--------------	--	---------------------------------------

Title  
SCHEDULE OF LEADING DIMENSIONS FOR DN15  
WEIR 'T' BODY COMPLETE WITH  
MAINLINE : HYGIENIC CLAMP ENDS WITH ISO 1127 S1 BORE  
BRANCH : DN15 HYGIENIC CLAMP END WITH ISO 1127 S1 BORE

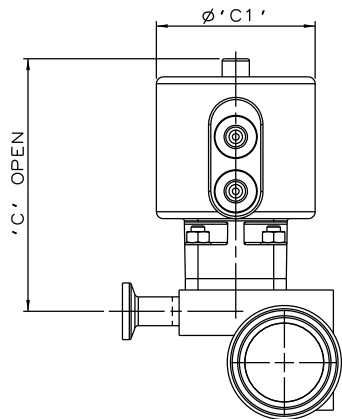
Drawn R1	Date 07.02.12	UNCONTROLLED IN HARD COPY FORMAT	
Checked RND	Date 23.03.12		
First Angle Projection Method E	DO NOT SCALE	Drawing No. WEB-122	Issue. 1



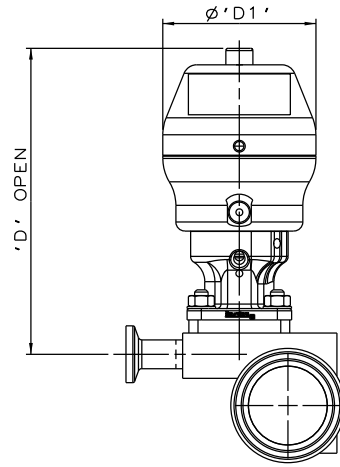
SS NON SEALED  
BONNET ASSEMBLY



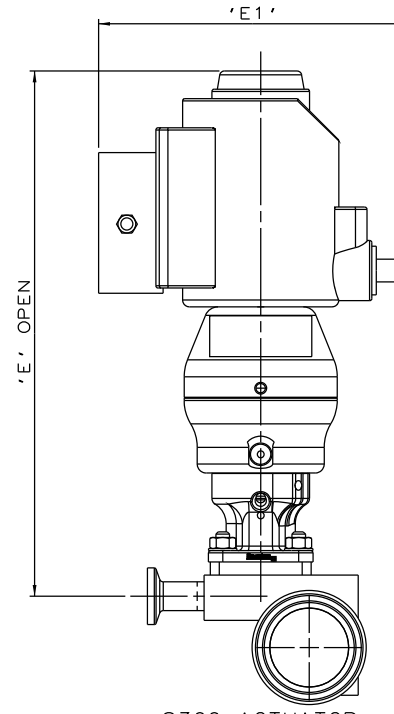
PES BONNET  
ASSEMBLY



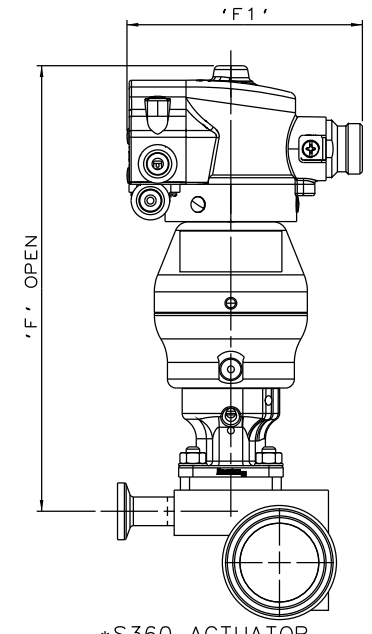
EC ACTUATOR  
(ALL MODES)



\*S360 ACTUATOR



\*S360 ACTUATOR  
WITH I-VUE SENSOR



\*S360 ACTUATOR  
WITH M-VUE SENSOR

The information on this sheet is Private and Confidential and is the property of Crane Process Flow Technologies Limited and must not be published directly or indirectly in any manner whatsoever without the written permission of the Company and must not be used in any way detrimental to their interests.  
© Crane Process Flow Technologies

<b>CRANE</b>	Process Flow Technologies A Crane Co. Company	<b>Saunders</b> The Science Inside
--------------	--	---------------------------------------

Title  
SCHEDULE OF LEADING DIMENSIONS FOR DN15/0.50 WEIR  
T-BODY (DN15/0.50 BRANCH) WITH  
HYGIENIC CLAMP ENDS WITH ISO 1127 S1 BORE.  
FITTED WITH TOPWORKS OPTIONS

Drawn RI	Date 09.05.17	UNCONTROLLED IN HARD COPY FORMAT
Checked RND	Date 09.05.17	
First Angle Projection Method E	DO NOT SCALE	Drawing No. WEB-122-ASSY
		Issue. 1

\* DIMENSIONS SHOW MAXIMUM ENVELOPE FOR ALL MODES

BRANCH SIZE	A		A1		B		B1		C		C1		D		D1		E		E1		F		F1		
mm	inch	mm	inch	mm	inch	mm	inch	mm	inch	mm	inch	mm	inch	mm	inch	mm	inch	mm	inch	mm	inch	mm	inch	mm	inch
DN15	0.50	88.7	3.49	62.0	2.44	111.7	4.40	62.0	2.44	115.7	4.56	70.0	2.75	139.7	5.50	67.5	2.66	235.7	9.28	136.0	5.35	200.0	7.87	103.8	4.09